

INDUSTRY LEADERS FOR ALL YOUR LASER HAIR AND AESTHETICS NEEDS

## TECHNOLOGY & SERVICES

LASER HAIR REMOVAL  
LASER FACIAL REJUVE  
PIGMENTED LESIONS  
AGE & SUN SPOTS  
VEIN TREATMENTS  
MICROCIRCULATION  
LYMPHATIC REJUVE  
CELLULITE TREATMENTS

**A** At Smoothe Laser we have incorporated the Apogee Elite & Triactive Dermology laser systems

It is the most advanced laser on the market today consistently winning the ATnT (*Aesthetics Trends & Technologies*) Laser & Light Choice Awards every year since May of 2004

## OUR MISSION

The mission of Smoothe Laser Clinics and Aesthetics, is to help you peel away the years, the sun, the worry, and just plain old gravity.

We will work to meet expectations of hair reduction and skin rejuvenation, while focusing on the prevention of future damage to maintain your skin's optimal health.

[WWW.SMOOTHELASER.COM](http://WWW.SMOOTHELASER.COM)

403.277.SKIN (7546)



*Smoothe*  
Laser Clinics & Aesthetics  
Suite 102  
901 Centre St North  
Calgary, Alberta  
T2E 2P6  
P: 403. 277. 7546  
F: 403. 276. 3790  
E: info@smoothelaser.com

*Smoothe*  
Laser Clinics & Aesthetics



USING THE FDA APPROVED CYNOSURE APOGEE ELITE & TRIACTIVE DERMOMOLOGY LASERS



Tel. 403.277.Skin (7546)  
102-901 Centre Street North  
Calgary Ab, T2E 2P6

## HOW DO LASERS WORK?

Lasers can remove unwanted hair faster, more comfortably and more reliably than many other methods. Whether you are a man or a woman, young or old, laser hair removal is an alternative to plucking, shaving, waxing, electrolysis or chemical depilatories.

Depending on your needs, most body areas can be treated with this state-of-the-art technology.

**THE APOGEE ELITE IS THE MOST ADVANCED FDA APPROVED LASER ABLE TO TREAT ALL SKIN TYPES.**



## HOW DOES HAIR GROW?

### PHASE 1 ANAGEN

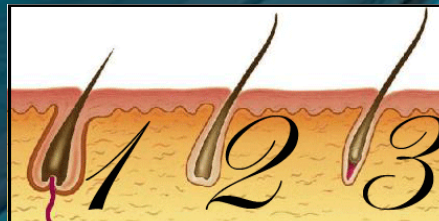
Hair's active growth phase is called anagen and lasts up to several years. The majority of hair is in this phase at any given time. During anagen, the hair has an abundance of melanin.

### PHASE 2 CATAGEN

The catagen or regressive phase lasts about 2 to 4 weeks. In this phase, hair stops growing but is not yet shed. About 3 or 4 percent of body hair is in this phase.

### PHASE 3 TELOGEN

Lasting weeks to months, the telogen or resting phase, is when hair falls out and a new hair begins to form. At least 10 to 15 percent of body hair is in this phase. At any given time, hair from various parts of the body are at different phases.



## HOW MANY TREATMENTS WILL I NEED?

The number of treatments required depends on skin and hair color, density and coarseness of the hair, as well as the specific area to be treated.

Since the energy is released into darker pigmented areas, lasers work best for people with light skin and dark hair.



Individuals with dark skin require more treatments and red, gray, white and blonde hairs do not respond as well to lasers, since there is no dark pigment in the hair follicles.

**EFFECTIVE . FAST . ADVANCED. BUILDS CONFIDENCE . PERMANENT HAIR REDUCTION**